

# ABS Weight OnTop

W-OT/ W-OT-D



MoA 197-10

DINCEN/TS  
16415/2017



DINEN795:  
2012, E



## Werkzeuge Tools

	17,24
	17,24
	3, 5

## Sicherheitshinweise Safety instructions



- DE Montageanleitung beachten (1) und Sicherheitshinweise beachten (2).
- EN Comply with the installation manual (1) and Comply with the safety instructions (2).
- FR Respecter la notice de montage (1) and Respecter les consignes de sécurité (2).
- NL Montagehandleiding in acht nemen (1) and Veiligheidsinstructies in acht nemen (2).
- BGR Спазвайте инструкциите за монтаж (1) and Спазвайте инструкциите за безопасност (2).
- DK Følg monteringsvejledningen (1) and Følg sikkerhedsanvisningerne (2).
- ET Järgige paigaldusjuhendit (1) ja ohutusjuhiseid (2).
- FI Noudata asennusohjeita (1) and Noudata turvallisuuohjeita (2).
- IT Rispettare le istruzioni di montaggio (1) and Rispettare le istruzioni di sicurezza (2).
- PL Przestrzegać zaleceń instrukcji montażu (1) and Przestrzegać zasad bezpieczeństwa (2).
- SK Dodržujte návod na montáž (1) and Dodržujte bezpečnostné pokyny (2).
- SL Sledite navodilo za namestitve (1) and Sledite varnostni navodila (2).
- ES Observar instrucciones de montaje (1) and Observar las indicaciones de seguridad (2).
- CS Dodržujte návod k montáži (1) and Dodržujte bezpečnostní pokyny (2).
- HU Vegyfelelmebeállítás szerelési útmutatóit (1) and Vegyfelelmebebiztonsági utasításokat (2).

Für eine ordnungsgemäße Montage ist eine Dokumentation des Einbaus zwingend erforderlich!  
For a proper installation, a completed documentation of assembly is absolutely necessary.

## Kontakte | Contact persons

Vertrieb & Technische Beratung  
Sales & Technical Support

+49 (0) 28 32- 97281- 0  
vertrieb@absturzsicherung.de

Schulung  
Training

+49 (0) 28 32- 97281- 148  
schulung@absturzsicherung.de

Montagevorbereitung  
Assembly

+49 (0) 28 32- 97281- 260  
service@absturzsicherung.de

## Mustertypenschild | Sample label

[ABS]

ABS SAFETY GMBH <sup>3</sup>

Kevelaer, Germany  
info@absturzsicherung.de  
www.absturzsicherung.de

<sup>1</sup>
<sup>2</sup>

---

**Mustertypenschild / Sample only**

6	Normen/ Standards	<input type="checkbox"/>	-
7	Max. Nutzer gleichzeitig (DIN EN 795:2012)	<input type="checkbox"/>	-
	Max. No. of simultaneous users	<input type="checkbox"/>	-
11	Modellnummer / Model number	<input type="checkbox"/>	-
<input type="checkbox"/>	-	<input type="checkbox"/>	-
<input type="checkbox"/>	-	<input type="checkbox"/>	-
<input type="checkbox"/>	-	<input type="checkbox"/>	-

**Chargennummer / Batch number**

8

9

10

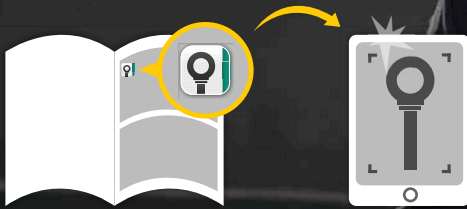
---

4

5

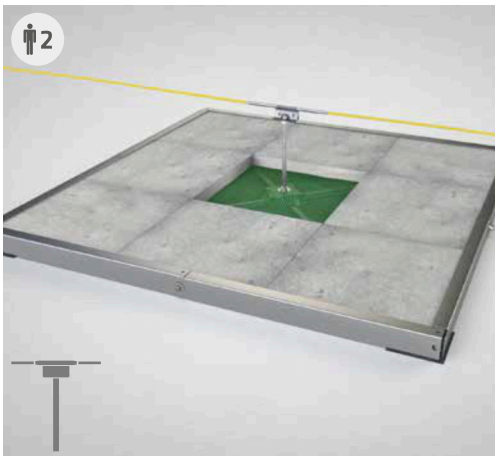
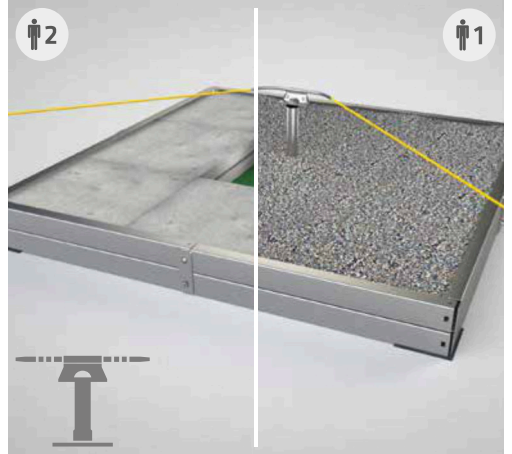
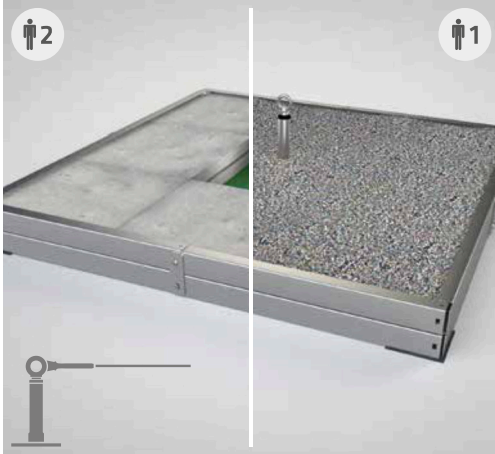
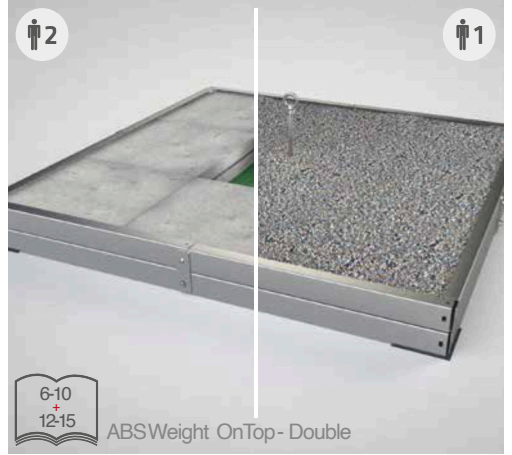
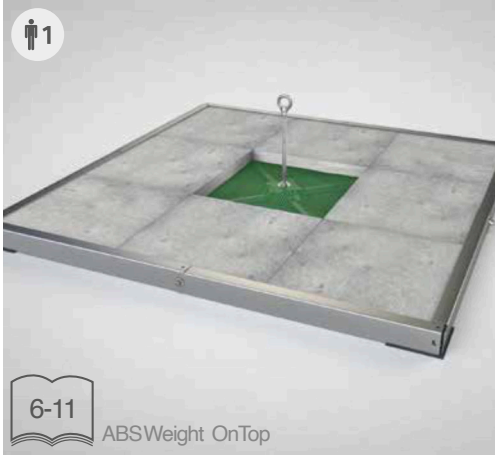
# Montageschritte dokumentieren

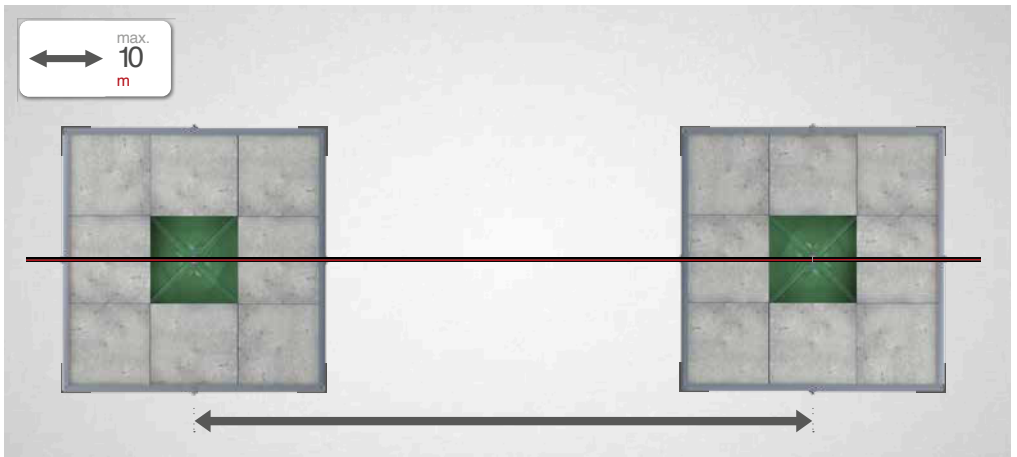
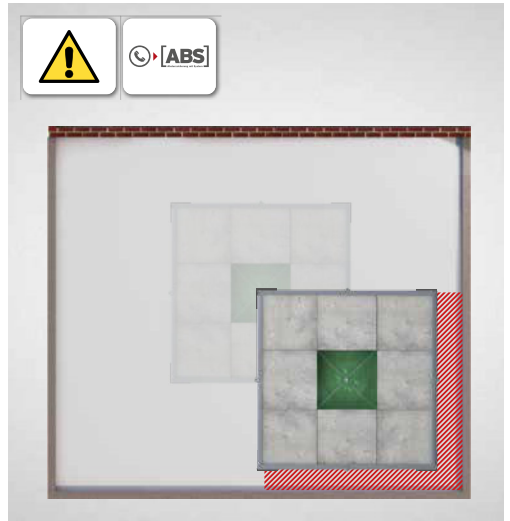
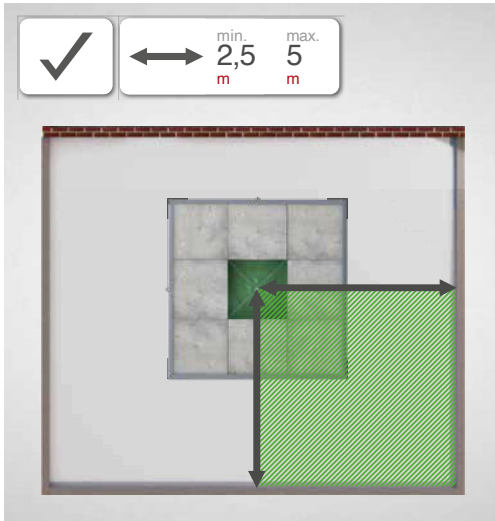
Document assembly step



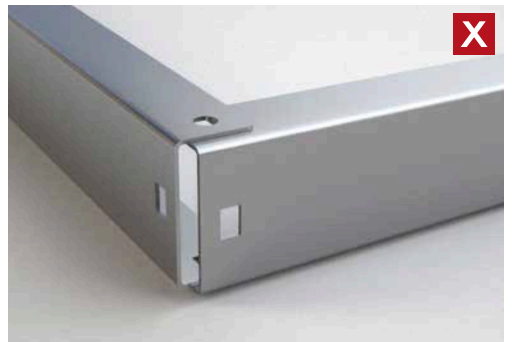
**Dokumentation ist Pflicht!**

Documentation is compulsory!





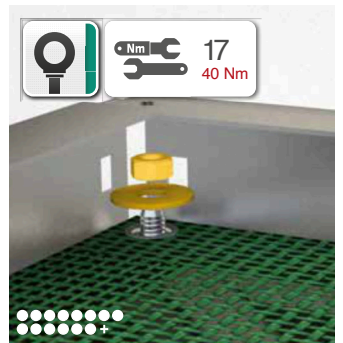
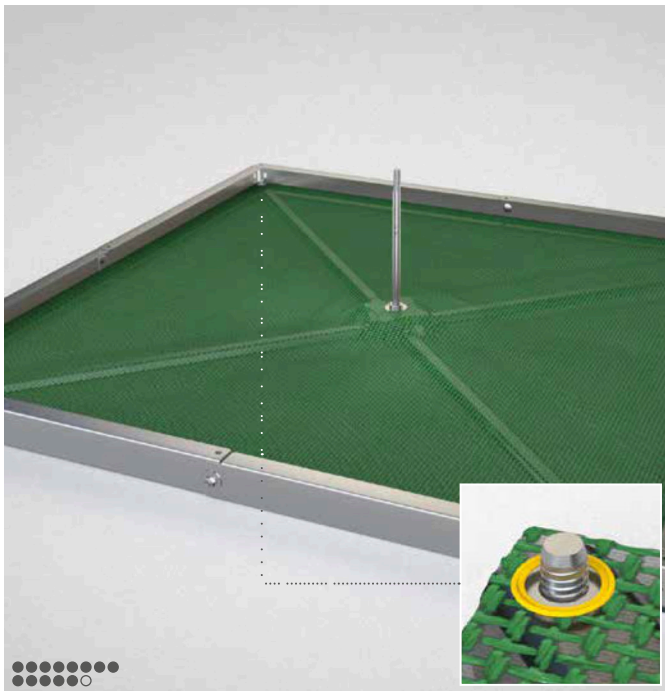






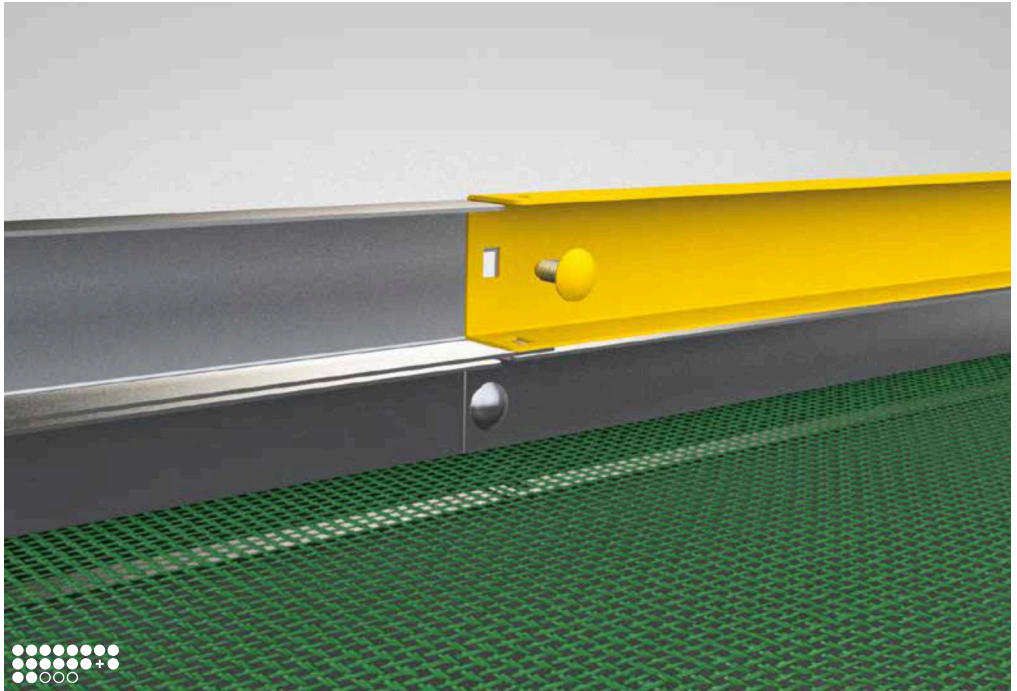








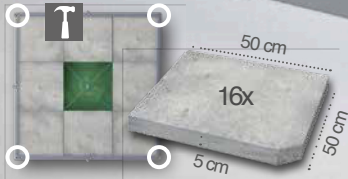
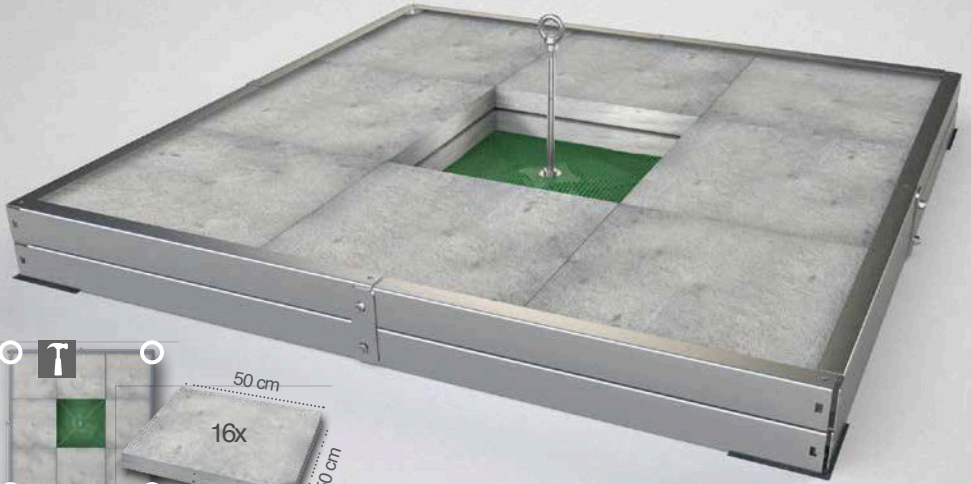








ca. **448 kg**  
Betonplatten/concreteslabs



ca. **450 kg**  
Kies/Gravel





MoA 098





**ALWAYS  
ON TOP!**





# ALWAYS ON TOP!

## **ABSSafety GmbH**

Gewerbering 3  
D-47623 Kevelaer  
Germany

Tel.: +49 28 32 97281- 0  
Fax: +49 28 32 97281- 285

[info@absturzsicherung.de](mailto:info@absturzsicherung.de)

 [www.absturzsicherung.de](http://www.absturzsicherung.de)

 [.de/en](http://www.absturzsicherung.de/en)

 [.de/fr](http://www.absturzsicherung.de/fr)

 [.de/nl](http://www.absturzsicherung.de/nl)



[instagram.com/abssafety](https://www.instagram.com/abssafety)



[youtube.com/abssafetygmbh](https://www.youtube.com/abssafetygmbh)



[facebook.com/ABS.Safety](https://www.facebook.com/ABS.Safety)